

● **BLAUPUNKT**

BLAUPUNKT  
Brand  
established  
**1924**  
GERMANY

DUAL VOICE COIL  
SUBWOOFER **GTW 11004 D**



*Enjoy it.*

**Operating and Installation Instructions**

# INTRODUCTION

Proper system planning is vital in order to maximize the device's performance and road safety. Plan your installation carefully to avoid compromising performance reliability of the system. Consult an authorized Blaupunkt dealer for installation or repair. Read the manual carefully before operating the device for the first time.

## Safety Notes

The Comfort Level of your hearing may adapt to the higher volume of sound over time, user is advised to keep the volume of the car radio to a moderate level for the protection of the ears and to increase the ability to hear any emergency warning signals (e.g. police and ambulance sirens).

Do not install the device near the trunk springs/lid/ gas tank/fuel lines.

## Disclaimer

In no event shall Blaupunkt be liable for any direct, indirect, punitive, incidental, special consequential damages to property or life and whatsoever arising out of or connected with the use or misuse of our products.

USA & CANADA: This product is not intended for sale in the United States and Canada. If purchased in the U.S. or Canada, this product is purchased on as-is basis. No warranty, whether expressed or implied is provided in the U.S. or Canada.

The product may differ slightly from the drawings.

## Recycling and Disposal

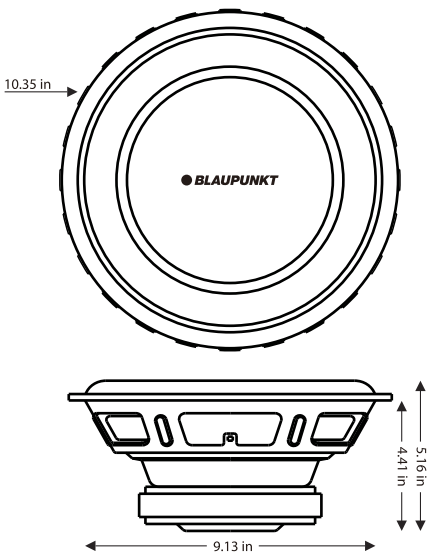


Do not dispose of your old unit in the household trash!

Use the return and collection systems available to dispose of the old device.

This manual may be updated from time to time without any notice. Visit [www.blaupunkt.com](http://www.blaupunkt.com) for more info.

# SPECIFICATION

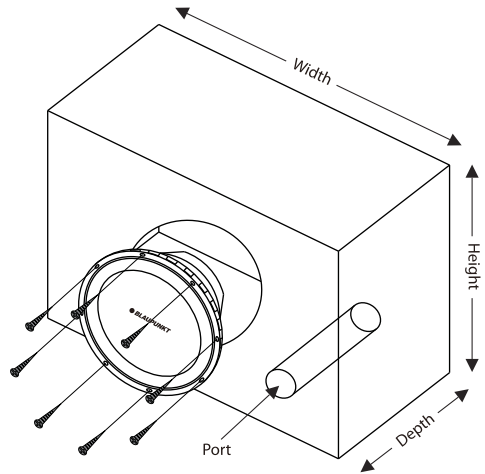
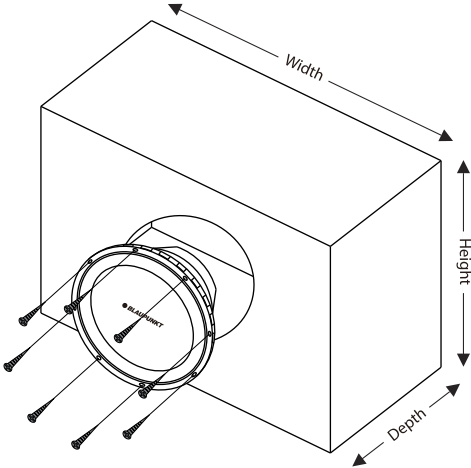


- Nominal Diameter : 10"
- Power Handling (RMS) : 200 watts
- Power Handling (max) : 600 watts
- Impedance : 4 ohms
- Sensitivity : 82 dB @ 2.83V/1m
- Frequency Response : 45 - 800 Hz
- Voice Coil Diameter : 49.5mm
- Magnet Weight : 50 Oz
- DC Resistance (Re) : 3.6 Ohms
- Resonant Frequency (Fs) : 50 Hz
- Mechanical Q (Qms) : 1.732
- Electromagnetic Q (Qes) : 1.415
- Total Q (Qts) : 0.779
- Diaphragm Mass Inc. Airload (Mms) : 140g
- Mechanical Compliance of Suspension (Cms) : 61.394u M/N
- Surface Area Of Cone (Sd) : 31.416m<sup>2</sup>
- BL Product (BL) : 11.083 Tm
- Compliance Equivalent Volume (Vas) : 8.604m<sup>3</sup>
- Maximum Linear Excursion (Xmax) : 10 mm
- Cone / Diaphragm Material : Paper / aluminium
- Surround Material : Rubber
- Voice Coil Wire Material : Copper
- Voice Coil Former : Aluminium
- Basket/Frame Material : Steel
- Magnet Material : Ferrite
- Overall Outside Diameter : 10.35"
- Overall Depth : 5.16"
- Baffle Cut-out Diameter : 9.13"
- No. of Mounting Holes : 8
- Mounting Hole Diameter : 9.69"(246mm)
- Size & Weight : 262x262x131mm & 3.4kg

# INSTALLATION

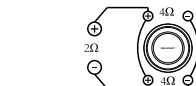
VENTED ENCLOSURES - 10"	
$V_b$ - Internal Area cu.ft. (Liter)	1.4 cu.ft. (39.64 L)
$F_b$ - Tuning Frequency	40 Hz
$F_3$ - 3dB Point	32.5 Hz
Height	12 in
Width	20 in
Depth	14 in
Port Diameter x Length	4 x 14 in

SEALED ENCLOSURES - 10"	
$V_b$ - Internal Area cu.ft. (Liter)	0.59 cu.ft. (16.71 L)
$F_3$ - 3dB Point	45.3 Hz
$Q_{tc}$ - Enclosure Damping	0.84
Height	12 in
Width	14 in
Depth	9.25 in

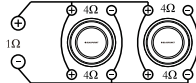


# WIRING DIAGRAM

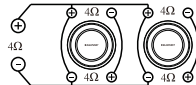
(1) 4 Ohm Speaker = 2 Ohm Load



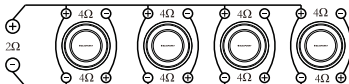
(2) 4 Ohm Speaker = 1 Ohm Load



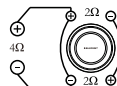
(3) 4 Ohm Speaker = 4 Ohm Load



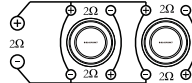
(4) 4 Ohm Speaker = 2 Ohm Load



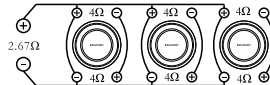
(1) 2 Ohm Speaker = 4 Ohm Load



(2) 2 Ohm Speaker = 2 Ohm Load



(3) 4 Ohm Speaker = 2.67 Ohm Load



(4) 2 Ohm Speaker = 4 Ohm Load



